

## Word + WebWorks = HTML Smoothing the Single-Source Workflow

LaHit Single Sourcing Seminar  
October 28, 2003

David Wernick  
AlmondWeb Ltd.  
tel 02-5712246  
david@almondweb.com  
http://www.almondweb.com

Copyright © 2003 AlmondWeb Ltd. All rights reserved.



## I Have a Deadline Tomorrow Noon

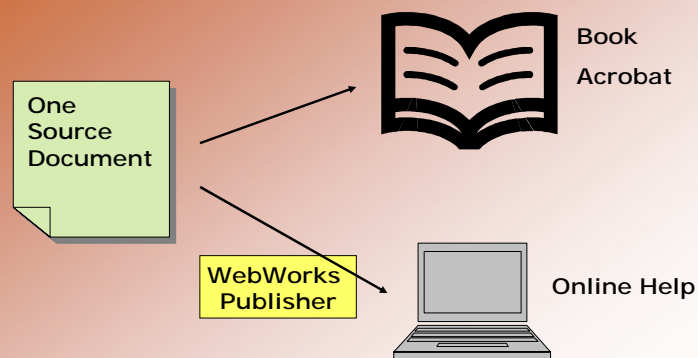
- 7 CHMs
  - 3 new, 4 extensively revised
- 500 pages of Word documents
  - 300 new
- Final corrections were today
- I haven't yet made the CHMs
- So what am I doing tonight?

Truth in advertising: It's a beta release

2



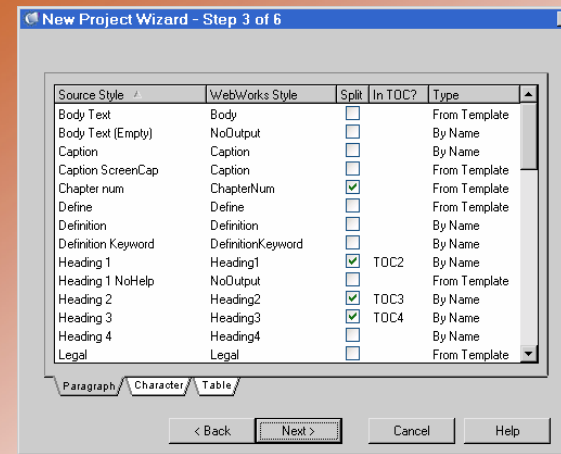
## Single-Source Workflow



3



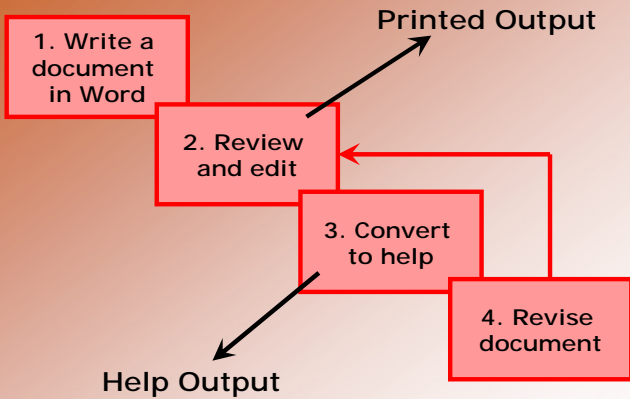
## WWP Maps Word Styles to HTML



4



## Workflow Steps



5



## Smoothing Step 3: Conversion Tools

### Editing approach

Write book  
Import to HAT  
Start editing  
15-20 hours/100 pages

Updates: 15-20 hours/100 pages, forever

### WWP approach

Write book  
Configure HAT once  
Convert in 5 minutes  
Do not edit output

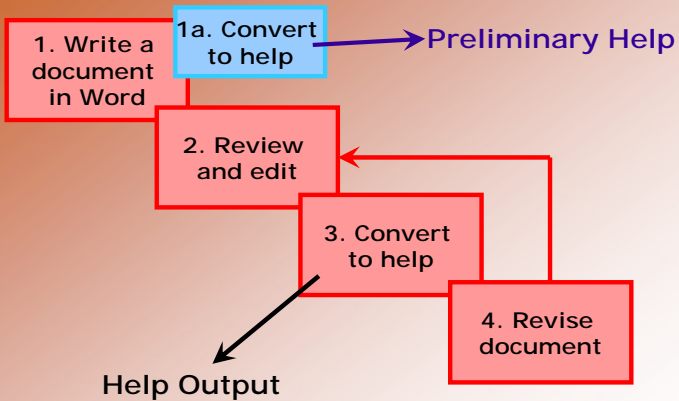
Updates: 5 minutes/update, forever

The payoff is here

6



## Don't Wait Till the Last Minute



7



## Role of Preliminary Help

- Test the Word docs
- Test the tool configuration
- Test the help in the software
- But for the final help ...
  - Don't edit the preliminary help
  - Regenerate the complete help using the same tool configuration

8



## Smoothing Step 1: Word Template

- All-style formatting
- Use single-source friendly formatting
- Semantic style use

9



## Single-Source Friendly Formatting

Tab is not supported in HTML

*DSN* Data source name. A nickname for the database connection, which you define in the operating system.

Newline + indentation is well supported

*DSN* Data source name. A nickname for the database connection, which you define in the operating system.

10



## Semantic Style Use

Definition

*DSN* Data source name. A nickname for the database connection, which you define in the operating system.

Cross reference

For more information, see *DSNs* on page 57.

Emphasis

Caution: *do not* delete the *DSN*.

11



## Test Formatting Techniques

WWP supports INCLUDETEXT poorly

For more information, see {INCLUDETEXT "Chap06.doc" "DNS\_head" \\*charformat \!} on page {INCLUDETEXT "Chap06.doc" "DNS\_page" \!}.

WWP supports HYPERLINK well

For more information, see {HYPERLINK "Chap06.doc" \l "DNS\_head"} on page {INCLUDETEXT "Chap06.doc" "DNS\_page" \!}

12

